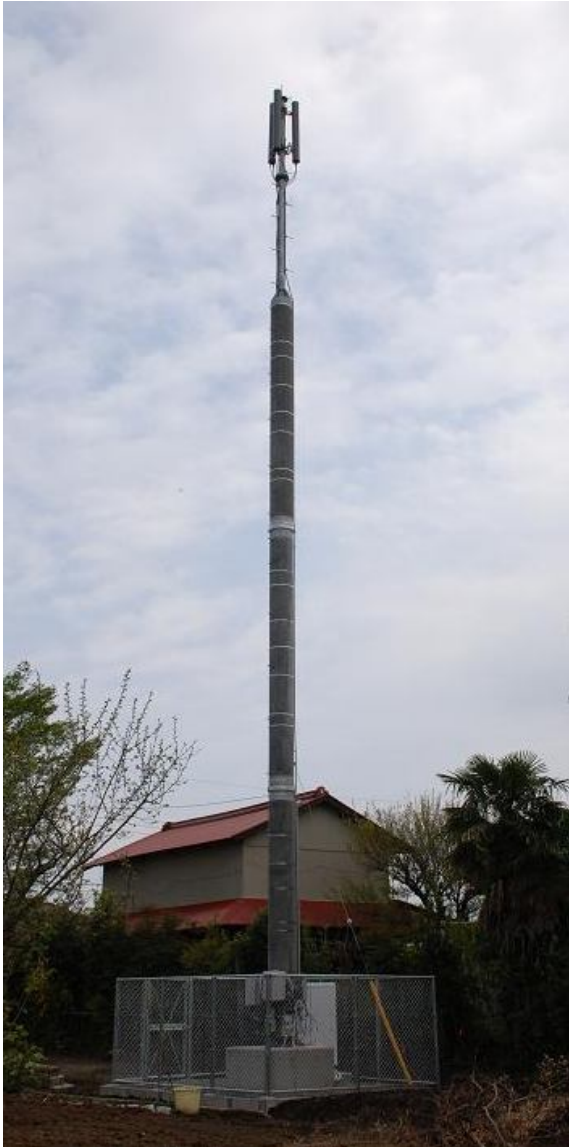


For Mobile Telecommunication Station Split concrete pole



- We use a split concrete pole to place the antenna of 20m (Above Ground). There is a big difference of price when you compare our steel pipe with the others one.
- By splitting the concrete pole in 6m (largest) each, it makes possible to transport with the 6-ton car.
- We achieved to make the product of high durability concrete by using anticrack material.
- We managed to make the look of a beautiful spectacle by making the antenna support hardware and the pole at equal center with monolithic structure.
- Our steel pipe pole is unlike with other standard ones, therefore it can prevent radio disturbance.
- We use the non-welded joint for the pole junction, therefore it is easy to operate in short time and accurately (makes uniform!).



【What is Non-welded joint?】

- Non-welded joint (PJ) is an access method product which is able to verify the accuracy by using exclusive hydraulic jack.